

Thinning Only

Thinning + Prescribed Fire

No Treatment

Community Wildfire Protection Plan (CWPP) For Tuolumne County 2024



Healthy Forests Restoration Act (HFRA) 2003

The HFRA provides incentives for communities to engage in comprehensive forest planning and prioritization. (CWPPs)

To utilize federal funding, there must be a CWPP in place.

What is Required?

Three minimum requirements per the HFRA and State of California:

- **Collaboration** – Local/state officials, federal agencies, and nongovernmental stakeholders.
- **Prioritized Fuel Reduction** – Identify and prioritize areas for hazardous fuel reduction treatments on both federal and nonfederal lands and recommend types of treatment.
- **Treatment of Structural Ignitability** – Recommend measures that homeowners and communities can take to reduce the ignitability of structures in the plan area.



The ~~REQUIRES~~ requires that three entities must mutually agree to the final contents of a CWPP:

The applicable local government(s)

The local fire department(s).

The state entity responsible for forest management.

In addition, these entities are directed to consult with and involve local representatives of the USFS and BLM and other interested parties or persons in the development of the plan.



2008 French Fire near Rawhide Road. Photo courtesy Tuolumne County Fire Department

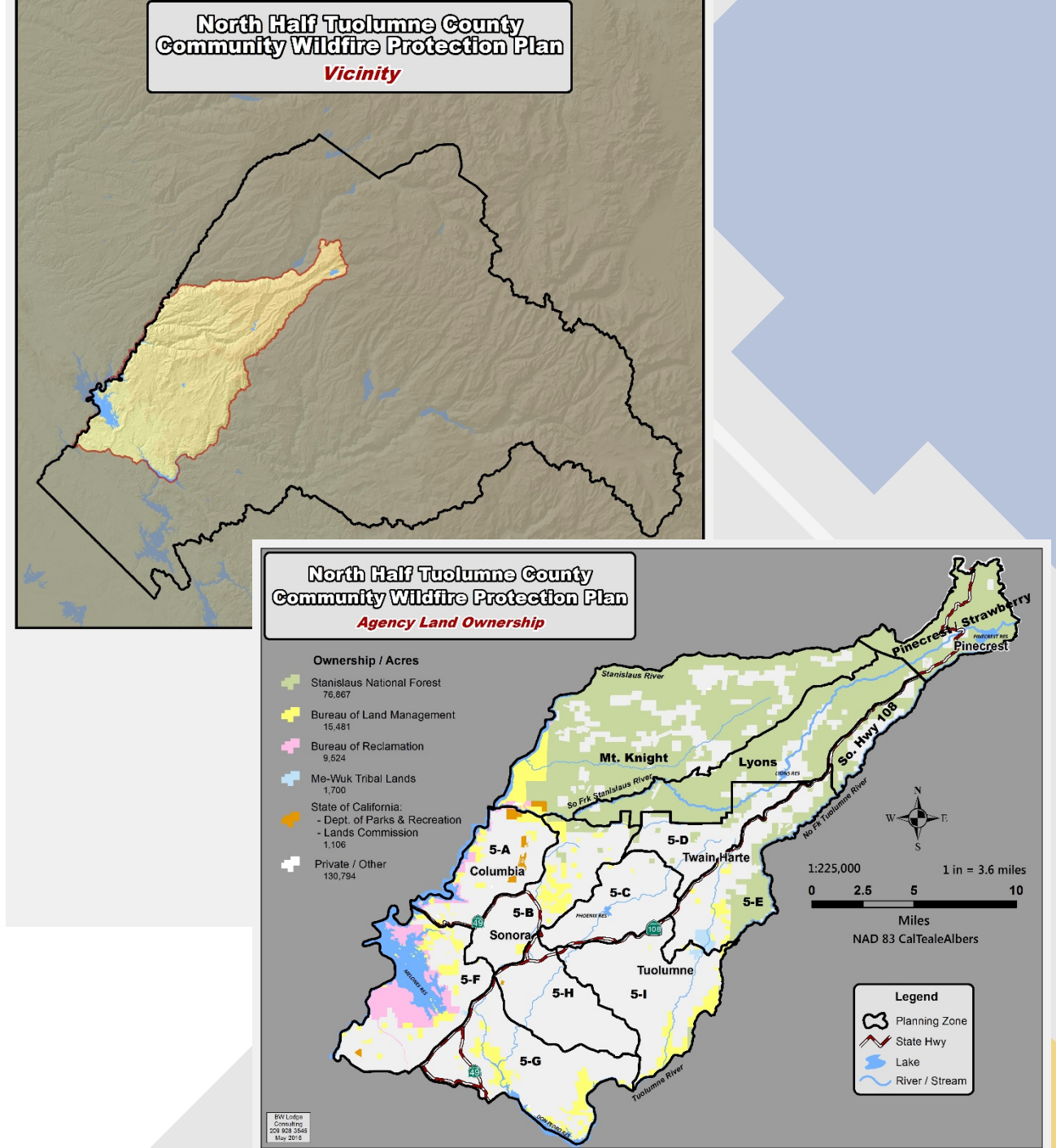
2022, Tuolumne Fire Safe Council received a grant award from the CAL FIRE, Fire Prevention Grants Program, to complete a CWPP update.

The grant ends on March 15th, 2024.

North Half Tuolumne County Community Wildfire Protection Plan (CWPP)

December 12, 2004

(Covers the north County geographically.)



CWPP & other related Plans

- Southwest Interface Project (SWIFT) Community Protection Planning, September 2004
- COMMUNITY WILDFIRE PROTECTION PLAN (CWPP) FOR THE Greater Tuolumne City Community, Attachment to the Tuolumne County CWPP, Dated December 14, 2004
- Tuolumne County Wildland Fire Evacuation Plan
- 2005 Highway 108 Strategic Plan

COMMUNITY WILDFIRE PROTECTION PLAN

TUOLUMNE COUNTY

February 2024

FINAL

*Prepared by the Tuolumne Fire Safe Council in partnership
with the County of Tuolumne*



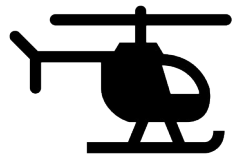
Funding for this project provided by the California Department of Forestry and Fire Protection's (CAL FIRE) Wildfire Prevention Grants Program as part of the California Climate Investments Program.



<https://cwpp.tuolumnefiresafe.org/>

Approved by:
Tuolumne County
Supervisors
Tuolumne County
CALFIREiviso

The CWPP is intended to be a living document and updates are expected as the needs in a community change and evolve.



In Summary, the CWPP...



- is a community-based plan
- focused on identifying and addressing local hazards and risks from wildfire.
- determines what is at risk
- provides actions for the community to address wildfire threat.

Steering Group
Provides support, guidance and oversight of progress.

Approves Goals & Objectives, Planning Units, and the final draft

Bureau of Land Management

CAL FIRE

Chicken Ranch Me Wuk Indians

City of Sonora

County of Tuolumne

Fire Chiefs Association of Tuolumne County

Stanislaus National Forest

Yosemite National Park

Tuolumne Band of the Me Wuk Indians

Tuolumne County Fire

Tuolumne Fire Safe Council



Tuolumne County CWPP

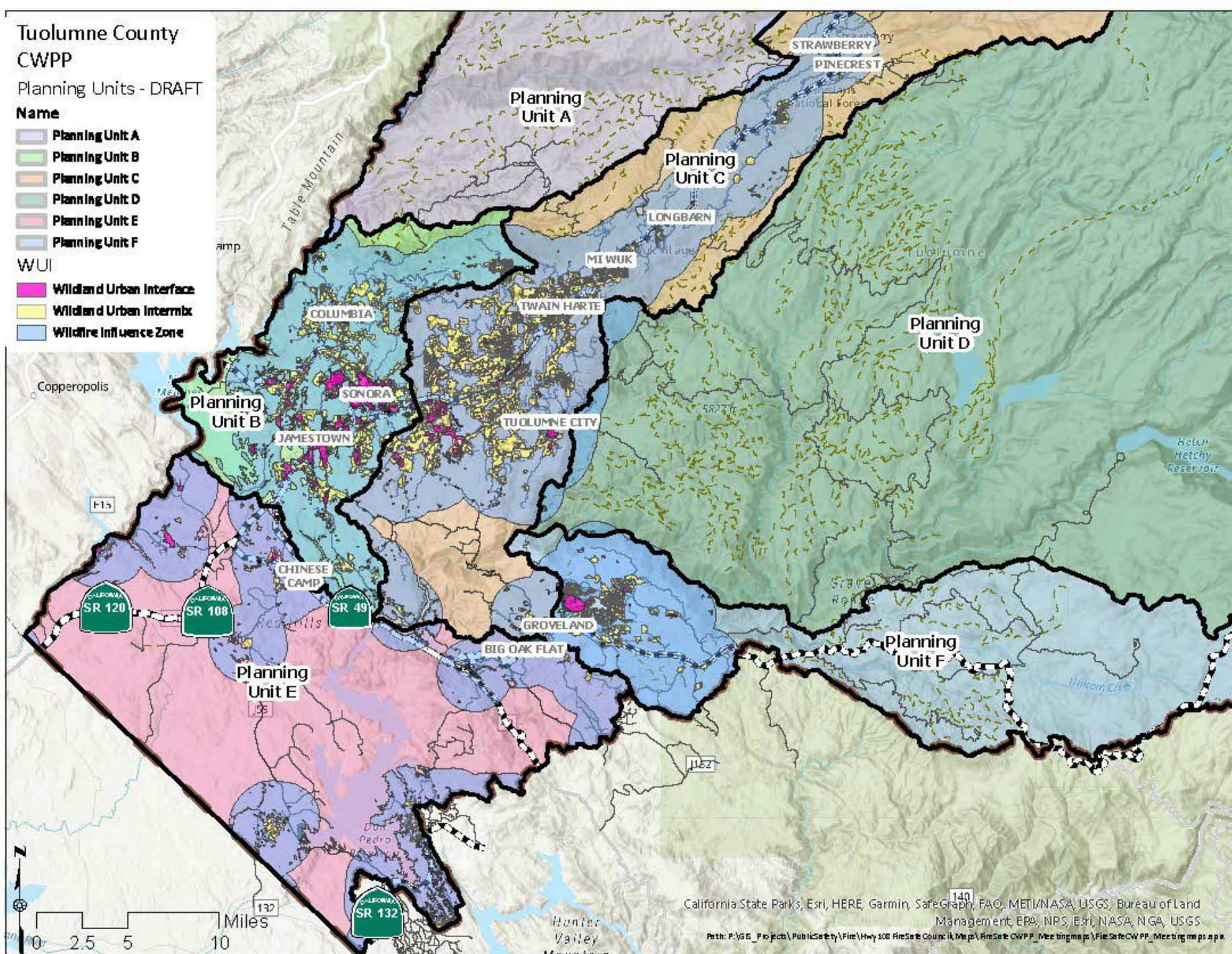
Planning Units - DRAFT

Name

- Planning Unit A
- Planning Unit B
- Planning Unit C
- Planning Unit D
- Planning Unit E
- Planning Unit F

WUI

- Wildland Urban Interface
- Wildland Urban Intermix
- Wildfire Influence Zone



California State Parks, Esri, HERE, Garmin, SafeGraph, FAO, METI/NASA, USGS, Bureau of Land Management, EPA, NPS, Esri, NASA, NGA, USGS
 Path: P:\VGE_Projects\PublicSafety\Fire\Hwy 108 FireSafe Council, Maps, FireSafe CWPP_Meeting.mxd, FireSafeCWPP_Meeting.mxd

CWPP GOALS & OBJECTIVES

CWPP Goals

- + To enhance safety and preparedness for responders and public.
- + To create healthy and productive fire adapted communities
- + To restore and maintain healthy and fire resilient landscapes





CWPP GOALS & OBJECTIVES

CWPP Objectives

- Restore and maintain **healthy, resilient landscapes** in all ecotypes.
- Plan, prioritize and coordinate **fuels reduction treatment projects** and funding sources to ensure **smart investments** based on risk and potential effectiveness.
- Identify and prioritize potential **hazardous fuel reduction treatments**, and types and methods of treatments (including maintenance and fire use)
- Create **Collaborative partnerships** for all lands treatments (large scale).



CWPP GOALS & OBJECTIVES

CWPP Objectives (cont.)

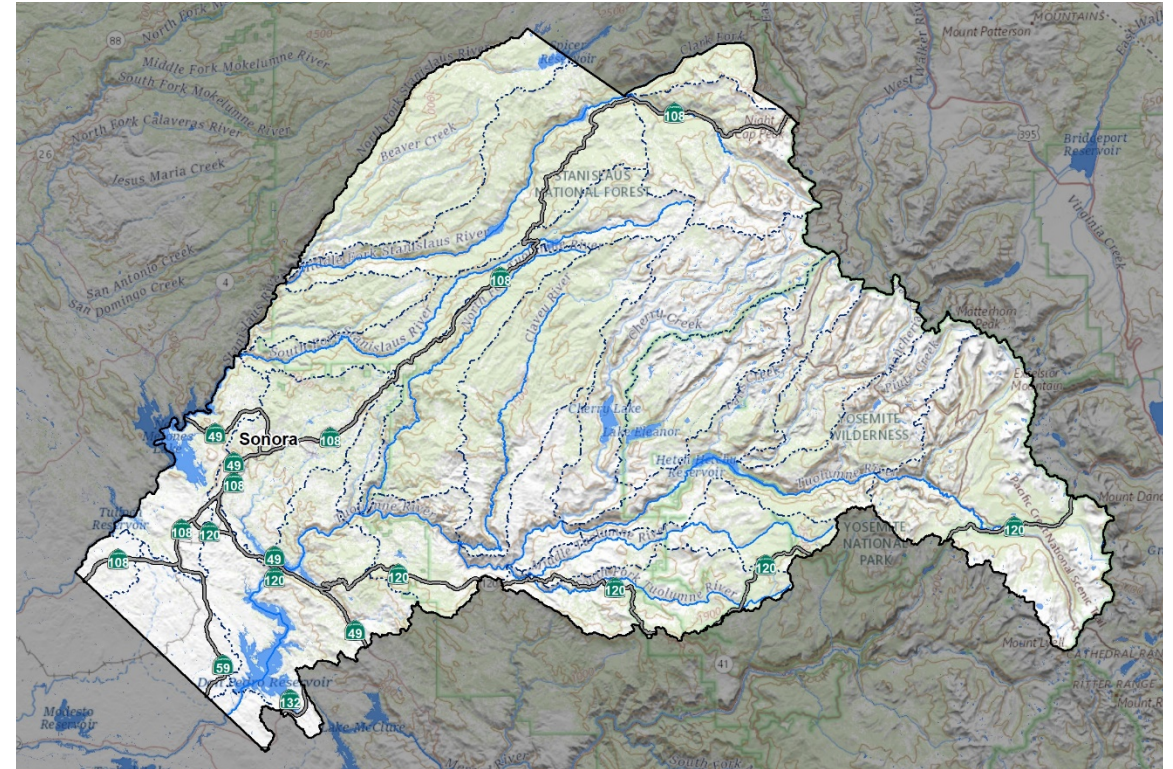
- **Wildland urban interface (WUI)** fuel reduction treatments are planned, funded & implemented.
- Potential **evacuation ingress/egress routes** are identified and communicated to responders and residents.
- Recognized **Firewise Communities** are supported, and actively engaged in reducing fire risk throughout their neighborhoods.
- Identify measures that homeowners, businesses, and communities can take to **reduce the ignitability of structures**.
- Reduce human caused **ignitions**.



CWPP Development Process

Motivation

- High Fire Prone Environment
 - Rugged mountains and steep terrain
 - Mediterranean climate & windy conditions
 - Majority in Very-High or High FHSZs
- Key Vulnerabilities
 - Numerous, small isolated communities
 - Limited first responders and emergency services
 - Limited evacuation routes
 - Communication “dead-zones”
 - Seasonal visitors and workers
 - Part-time homeowners



Community Wildfire Protection Plan

Components

- + **Community Profile**
- + **Wildfire Hazard Assessment**
 - Fuels, Weather, Topography
 - Science & Modelling
 - Climate Impacts
- + **Risks and Vulnerabilities**
 - Life-safety and Vulnerable Populations
 - Property
 - Cultural/historical resources
 - Environmental resources
 - Critical infrastructure
 - Access/Egress
 - Emergency communications
 - Water and power supplies
- + **Mitigations and Action Plan**

+ **Monitoring and Evaluation**

